



**Ford Yacht Club**

Race Committee

29500 South Pointe Road

Grosse Ile, MI

# 2023 FYC Regatta

*Skipper's Packet*

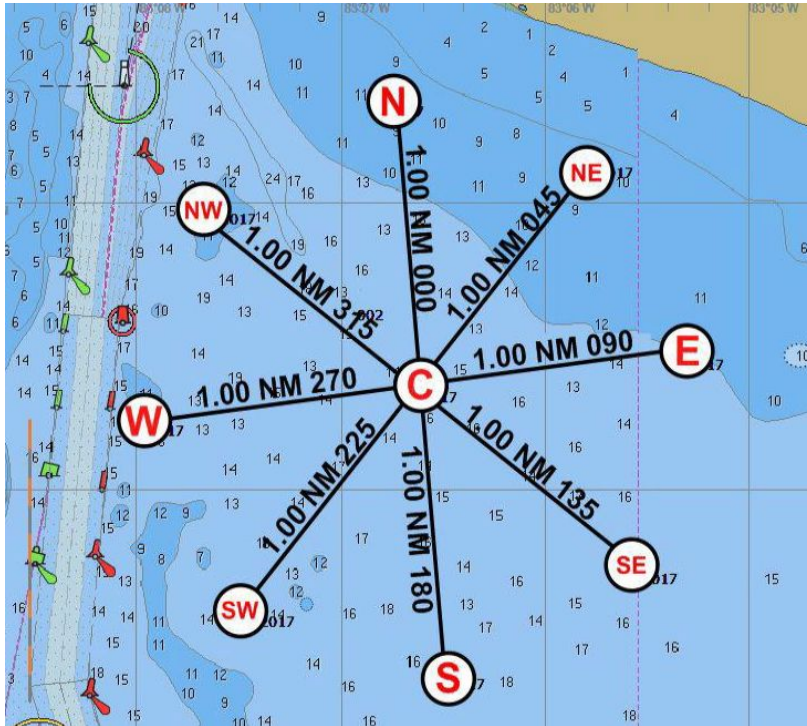
2023 Ford Yacht Club Regatta Course List

ALL MARK ROUNDINGS ARE TO PORT

Approximate Wind Direction	Spinnaker	Distance(nm)	JAM	Distance(nm)
North 360° (338° - 22°)	N1 C-Np-Wp-Sp-C	4.8	C-Np-Sp-C	4
	N2 C-Np-Wp-Sp-Np-C	6.8	C-Np-NWp-NEp-Np-C	6
	N3 C-Np-Wp-Sp-Np-Sp-C	8.8	C-Np-NWp-SWp-NWp-SWp-Sp-C	7.8
	N4 C-Np-Wp-Sp-Np-Sp-Np-C	10.8	C-Np-Wp-SEp-NEp-SEp-NEp-Np-C	10.3
<b>Approximate Wind Direction</b>				
Northeast 45° (23° - 67°)	NE1 C-NEp-NWp-SWp-C	4.8	C-NEp-SWp-C	4
	NE2 C-NEp-NWp-SWp-NEp-C	6.8	C-NEp-Np-SEp-NEp-C	6
	NE3 C-NEp-NWp-SWp-NEp-SWp-C	8.8	C-NEp-Np-Wp-Np-Wp-SWp-C	7.8
	NE4 C-NEp-NWp-SWp-NEp-SWp-NEp-C	10.8	C-NEp-NWp-Sp-Ep-Sp-NEp-C	10.3
<b>Approximate Wind Direction</b>				
East 90° (68° - 112°)	E1 C-Ep-Np-Wp-C	4.8	C-Ep-Wp-C	4
	E2 C-Ep-Np-Wp-Ep-C	6.8	C-Ep-NEp-Sp-Ep-C	6
	E3 C-Ep-Np-Wp-Ep-Wp-C	8.8	C-Ep-NEp-NWp-NEp-NWp-Wp-C	7.8
	E4 C-Ep-Np-Wp-Ep-Wp-Ep-C	10.8	C-Ep-Np-SWp-Sp-SWp-Sp-Ep-C	10.3
<b>Approximate Wind Direction</b>				
Southeast 135° (113° - 157°)	SE1 C-SEp-NEp-NWp-C	4.8	C-SEp-NWp-C	4
	SE2 C-SEp-NEp-NWp-SEp-C	6.8	C-SEp-Ep-SWp-SEp-C	6
	SE3 C-SEp-NEp-NWp-SEp-NWp-C	8.8	C-SEp-Ep-Np-Ep-Np-NWp-C	7.8
	SE4 C-SEp-NEp-NWp-SEp-NWp-SEp-C	10.8	C-SEp-NEp-Wp-SWp-Wp-SWp-SEp-C	10.3
<b>Approximate Wind Direction</b>				
South 180° (158° - 202°)	S1 C-Sp-Ep-Np-C	4.8	C-Sp-Np-C	4
	S2 C-Sp-Ep-Np-Sp-C	6.8	C-Sp-SEp-Wp-Sp-C	6
	S3 C-Sp-Ep-Np-Sp-Np-C	8.8	C-Sp-SEp-NEp-SEp-NEp-Np-C	7.8
	S4 C-Sp-Ep-Np-Sp-Np-Sp-C	10.8	C-Sp-Ep-NWp-Wp-NWp-Wp-Sp-C	10.3
<b>Approximate Wind Direction</b>				
Southwest 225° (203° - 247°)	SW1 C-SWp-SEp-NEp-C	4.8	C-SWp-NEp-C	4
	SW2 C-SWp-SEp-NEp-SWp-C	6.8	C-SWp-Sp-NWp-SWp-C	6
	SW3 C-SWp-SEp-NEp-SWp-NEp-C	8.8	C-SWp-Sp-Ep-Sp-NEp-C	7.8
	SW4 C-SWp-SEp-NEp-SWp-NEp-SWp-C	10.8	C-SWp-SEp-Np-NWp-Np-NWp-SWp-C	10.3
<b>Approximate Wind Direction</b>				
West 270° (248° - 292°)	W1 C-Wp-Sp-Ep-C	4.8	C-Wp-Ep-C	4
	W2 C-Wp-Sp-Ep-Wp-C	6.8	C-Wp-SWp-Np-Wp-C	6
	W3 C-Wp-Sp-Ep-Wp-Ep-C	8.8	C-Wp-SWp-SEp-SWp-SEp-Ep-C	7.8
	W4 C-Wp-Sp-Ep-Wp-Ep-Wp-C	10.8	C-Wp-Sp-NEp-NWp-NEp-NWp-Wp-C	10.3
<b>Approximate Wind Direction</b>				
Northwest 315° (293° - 337°)	NW1 C-NWp-SWp-SEp-C	4.8	C-NWp-SEp	4
	NW2 C-NWp-SWp-SEp-NWp-C	6.8	C-NWp-Wp-NEp-NWp-C	6
	NW3 C-NWp-SWp-SEp-NWp-SEp-C	8.8	C-NWp-Wp-Sp-Wp-Sp-SEp-C	7.8
	NW4 C-NWp-SWp-SEp-NWp-SEp-NWp-C	10.8	C-NWp-SWp-Ep-Np-Ep-Np-NWp-C	10.3

# 2023 Buoy Locations

(same as 2023 WSSC WNATR Locations)











C	42° 01.2511' N	083° 06.6750' W
N	42° 02.2571' N	083° 06.7124' W
NE	42° 01.9817' N	083° 05.7005' W
E	42° 01.2642' N	083° 05.3938' W
SE	42° 00.5449' N	083° 05.7247' W
S	42° 00.2524' N	083° 06.6699' W
SW	42° 00.5449' N	083° 07.6253 W
W	42° 01.2793' N	083° 07.9850' W
NW	42° 01.9571' N	083° 07.6256' W

## Starting information

CLASS	CLASS FLAG	Rating
Spinnaker A	Blue	TBD _____
Spinnaker B	Yellow	TBD _____
One Design / Spinnaker C	Green	TBD _____
JAM A	White	TBD _____
JAM B	Purple	TBD _____
Cruising Class	FYC Burgee	ALL

## Sample starting sequence per RRS rule 26

Flag signal	Number of sound signals when raised	Number of sound signals when lowered	Description
	1 ↑ 		Warning Signal. 5 minutes to race start when class flag raised.
	1 P ↑ 		Preparatory signal. 4 minutes to start when P flag raised. Flag P used or if a starting penalty applies I, Z, Black flag or I over Z is used in place of P.
	1 P ↓ 	<b>Long sound</b>	Preparatory signal. P flag removed 1 minute before start. Flag P used or if a starting penalty applies I, Z, Black flag or I over Z is used in place of P.
	1 ↓ 		Start Signal. Race start when class flag removed.



Individual  
Recall  
'X'

Over Early –  
Individual  
Recall

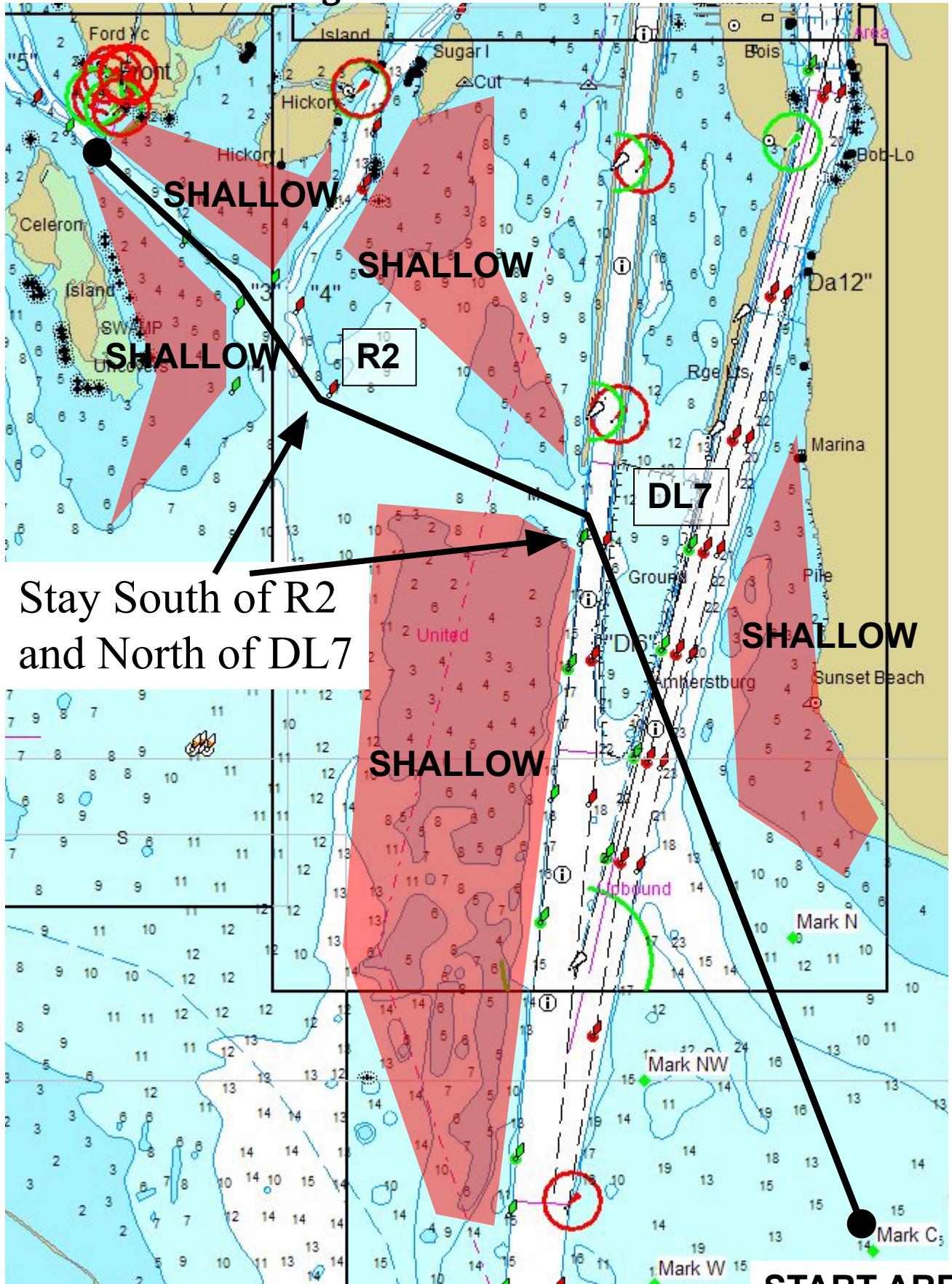


General  
Recall

Over Early –  
General Recall



# Recommendations to get to and from the course



**SHALLOW**  
**SHALLOW**  
**SHALLOW**

Stay South of R2  
and North of DL7

**SHALLOW**  
**SHALLOW**

**START AREA**